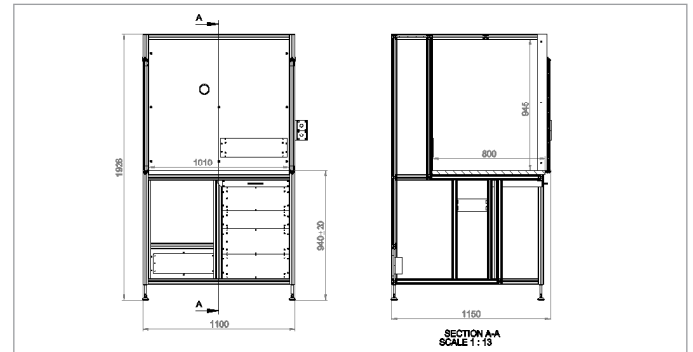
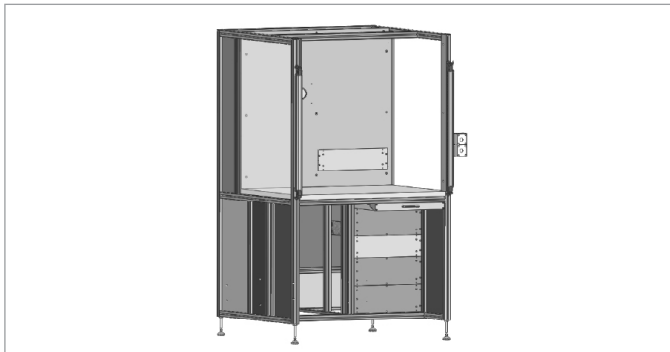


# DATA SHEET

## Accessories: Test cage PK 7000A



Test cage PK 7000A with light curtain and displaced foot space

<b>Description</b>	For test station setups in which a necessary protection against contact is required, test cages are particularly well suited. Through the light curtain the DUT cannot be touched during the generation of dangerous voltages. Once the light curtain is interrupted there is a forced switch-off. Due to the simple and comfortable handling test cages with light curtain are particularly well suited for testing large quantities.	
<b>PK 7000A</b>	<ul style="list-style-type: none"> <li>• Setup made of aluminium profile 40 x 40 mm (1.6 x 1.6 in.) with device compartment 19" / 16 HU</li> <li>• Fully insulated test room made of PVC (colour: RAL 7011), casing made of PVC (colour: RAL 7011) and PC-polycarbonate (laterally)</li> <li>• Safety light curtain with finger protection, 14 mm (0.6 in.) (type 4, FIL3, PLe)</li> <li>• External dimensions (HxWxD): 1,926 x 1,100 x 1,150 mm (75.6 x 43.3 x 45.3 in.)</li> <li>• Internal dimensions (HxWxD): 945 x 1,010 x 800 mm (37.2 x 39.8 x 31.5 in.)</li> </ul>	
<b>Variants</b>	Simple test hoods	For simple tests of small quantities test hoods with swivelling acrylic glass hoods are offered. These are available with or without device compartment to integrate a test device. In addition, depending on the application, different connection sets are available.
	Tandem test hood	For large quantities so-called tandem test hoods are also a good solution. Here two equal test areas are available. While it is tested in one test area, the other one can be loaded or unloaded at the same time. In a similar test and handling time the result is an optimum utilization of human and machine. Tandem test hoods can be equipped with swivelling acrylic glass hoods, movable test hoods or also with safety light curtain.
	Test cage with trapdoor	Test cages with trapdoor are mainly used when ergonomically a high number of DUT with a high weight is to be tested. The trapdoor is pneumatically moved, therefore the operator merely has to press a button, not move any mechanics.

### Versions

Design types	Specialty	Max. dimensions of DUT (HxWxD) in mm (in.)	Type
Simple test hood	Device compartment 19" / 5 HU	180 x 410 x 350 (7.1 x 16.1 x 13.8)	HB 2100A
Simple test hood	Swivel hood	200 x 500 x 350 (7.9 x 19.7 x 13.8)	HB 3400A
Extra wide test hood	Device compartment 19" / 5 HU	350 x 580 x 700 (13.8 x 22.8 x 27.6)	HB 5000A
Extra wide test hood	Double width, device compartment 2 x 19" / 5 HU	300 x 700 x 400 (11.8 x 27.6 x 15.7)	HB 6000A
Extra wide test hood	Double width, device compartment 2 x 19" / 5 HU	300 x 1,200 x 400 (11.8 x 47.2 x 15.7)	HB 7000A
Tandem test hood	Sliding hood, device compartment 2 x 19" / 3 HU	400 x 568 x 580 (15.7 x 22.4 x 22.8)	TK 6000A
Tandem test hood	Sliding hood	450 x 500 x 680 (17.7 x 19.7 x 26.8)	TK 7000A
Test cage with trapdoor	Trapdoor	755 x 800 x 640 (29.7 x 31.5 x 25.2)	FK 1000A
Test cage with light curtain	Light curtain on one side	790 x 640 x 660 (31.1 x 25.2 x 26.0)	PK 2000A
Test cage with light curtain	Double width, displaced foot space	940 x 1,890 x 975 (37.0 x 74.4 x 38.4)	PK 6000A
Test cage with light curtain	Light curtain, offset footwell	1,984 x 2,000 x 770 (78.1 x 78.7 x 30.3)	PK 6500A
Test cage with light curtain	Device compartment 19" / 16 HU, displaced foot space	945 x 1,010 x 800 (37.2 x 39.8 x 31.5)	PK 7000A